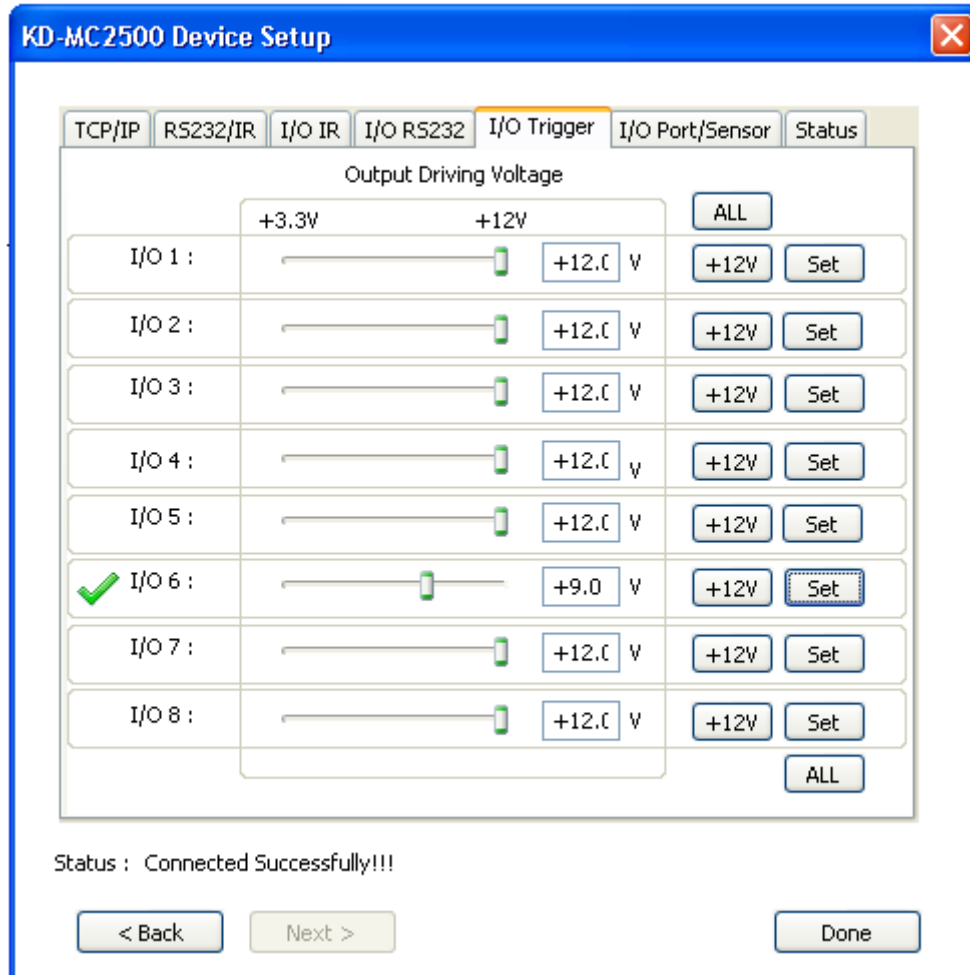


Hi Igor-

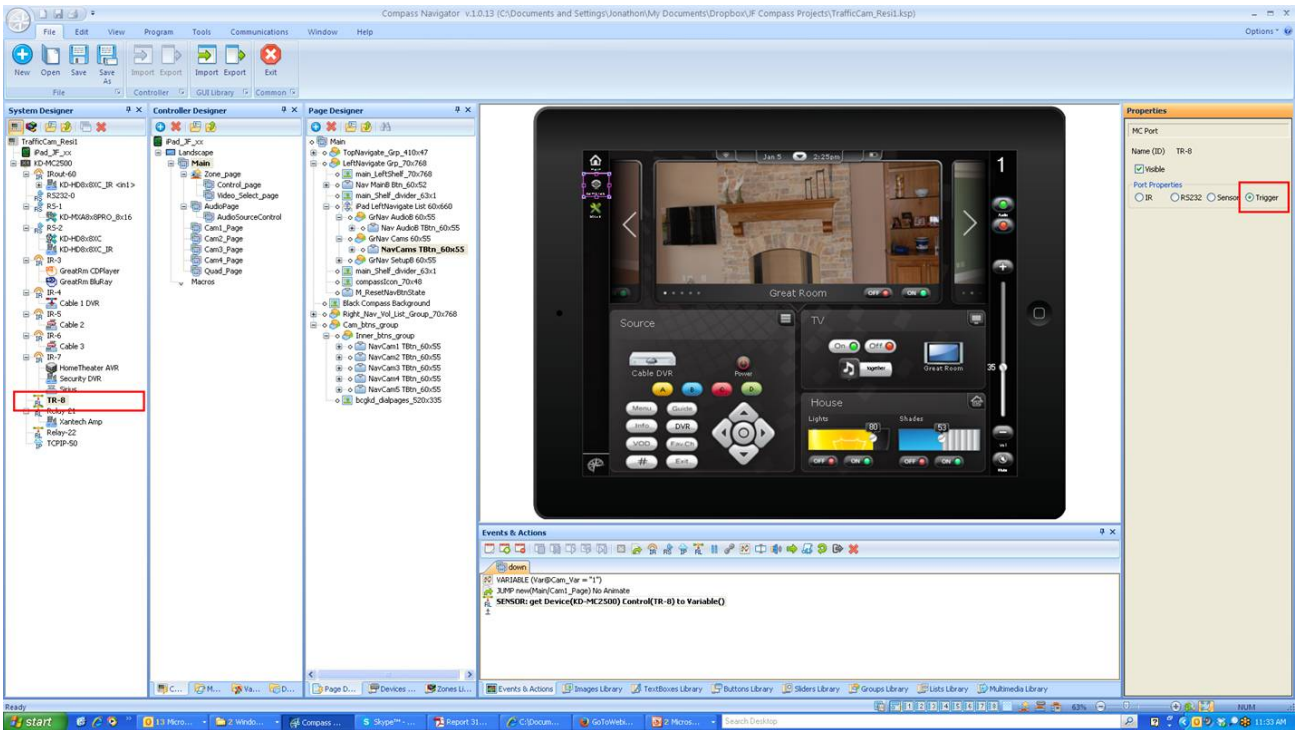
Here is how to set your multifunction port as a voltage trigger and to control the states:

The pinout is voltage on the tip, with ground on the sleeve of the 3.5mm cable.

1. Setup desired voltage level for appropriate multifunction port in KD-MC2500 Device Manager Software



2. Setup desired multifunction port as a trigger



2. Add Relay "RL" event & action to desired button(s). Choose KD-MC2500 and the port (TR-8 in this case). Choose "On Control" to execute voltage, "Off Control" to send no voltage, and "Toggle Control" to toggle between states.

