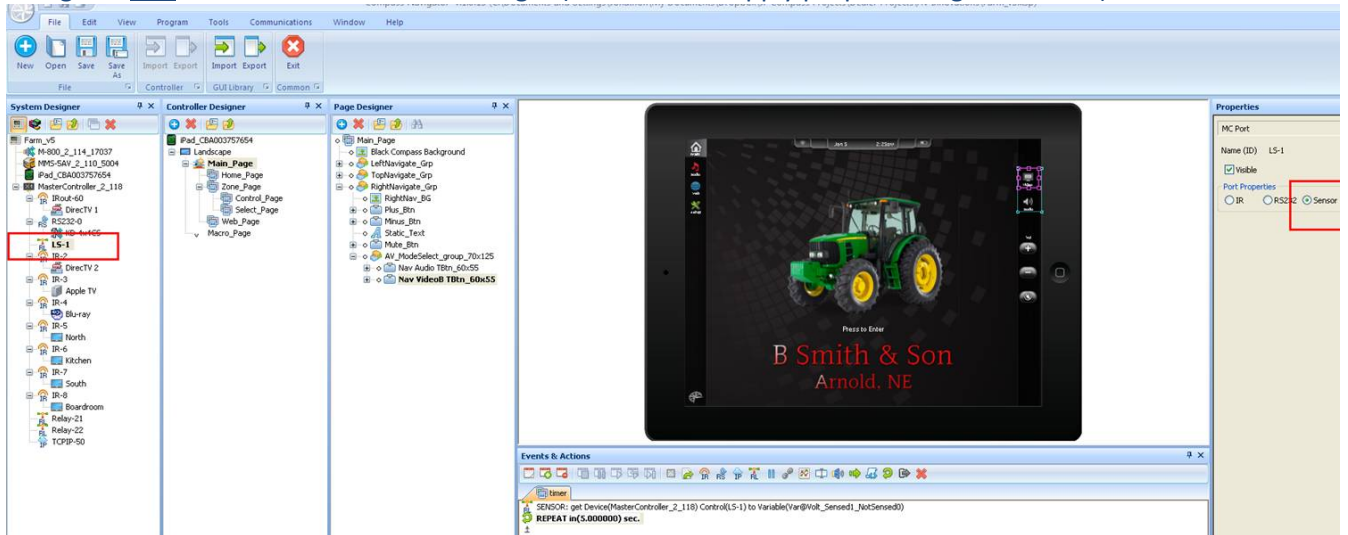


We can sense voltage from a connected device (including a third party control system) and have events and actions occur if voltage is / is not present.

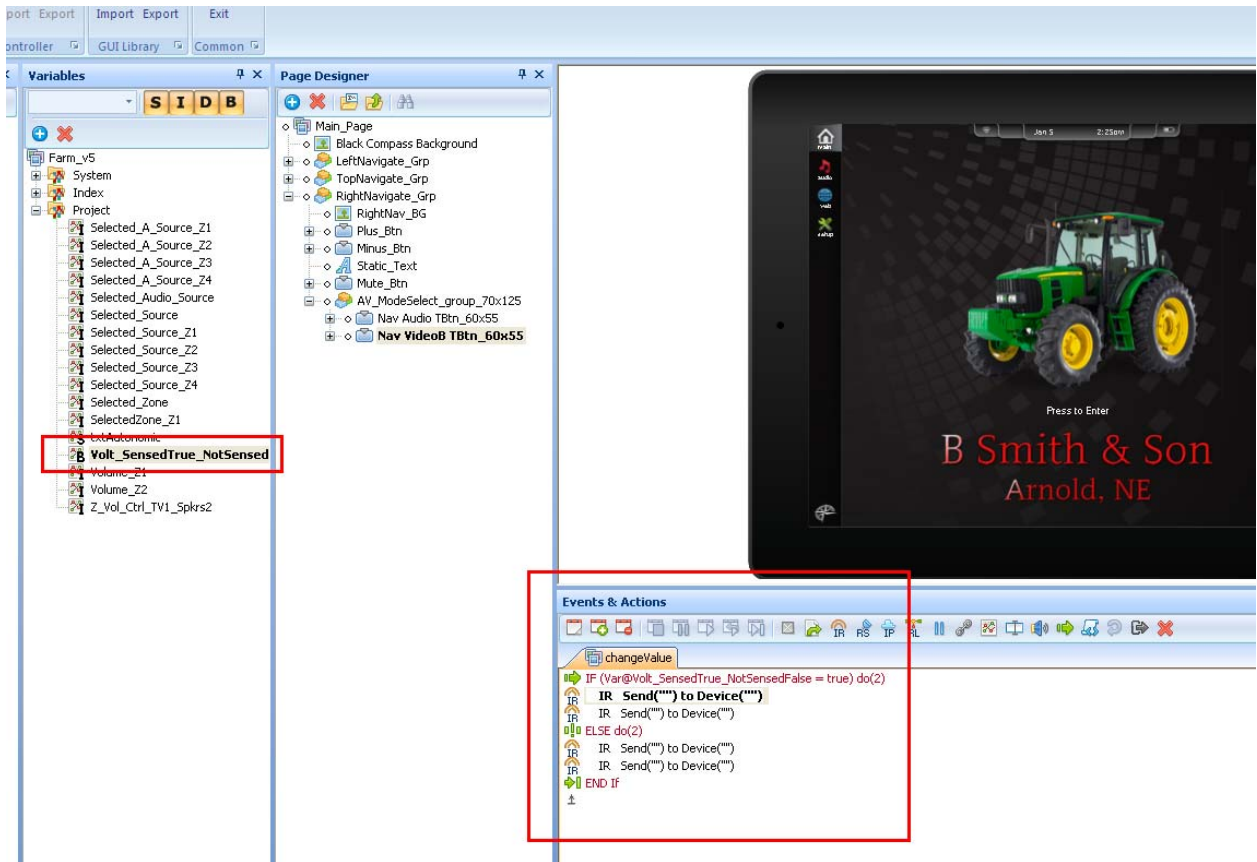
The KD-MC2500 can sense voltage on any multifunction port when configured as a sensor in Navigator and in KD-MC2500 Device Manager (make sure to apply proper voltage threshold).



You must create a boolean variable that will be associated with the sensing. In our software, voltage present = true, voltage not present = false.



You must create an Event & Action attached to the Variable that has if conditions. In the events and actions you'd like when voltage is/isn't sensed.



You must have a repeating page event occur approx every 5sec (can be more frequent, only slightly slows down the system, so up to you) in which the system polls to "get" the voltage status

